

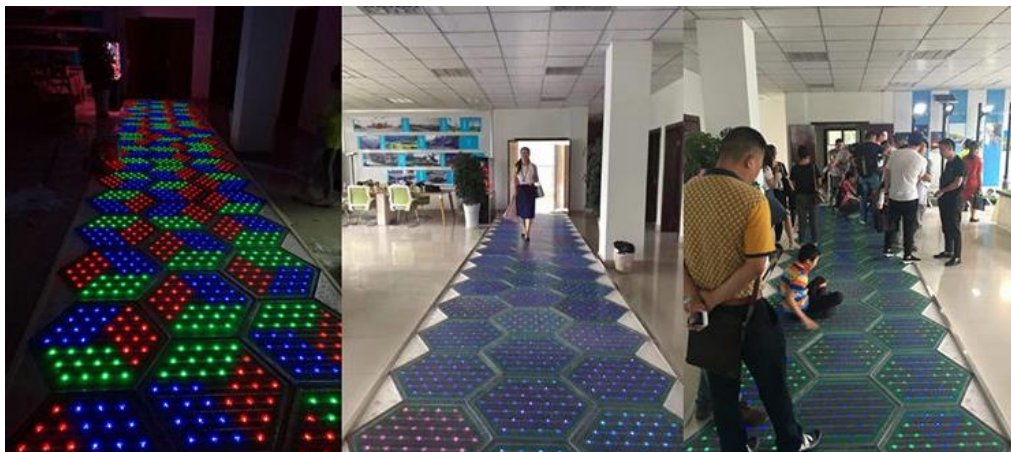
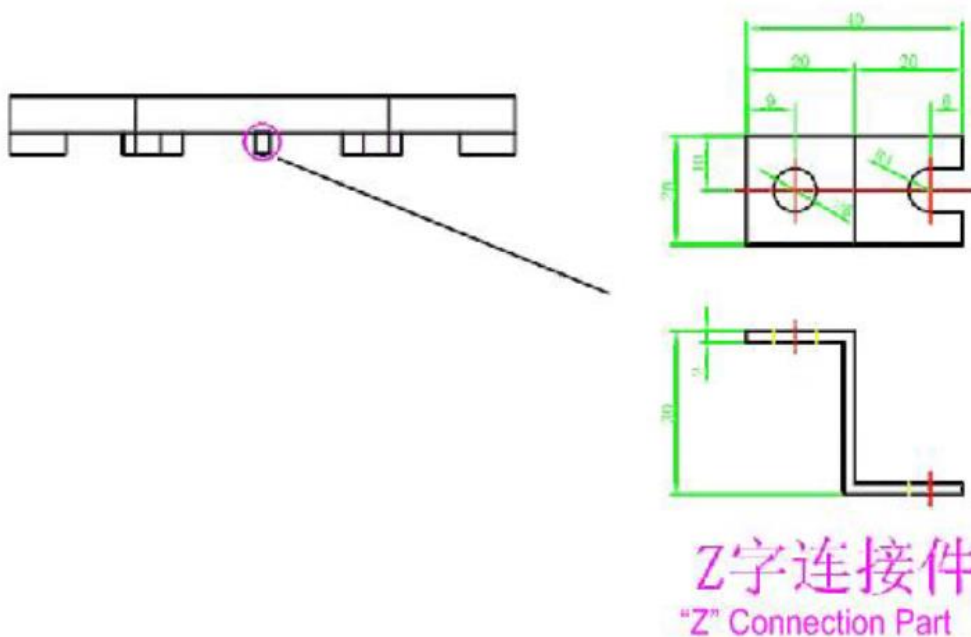
Installation Guideline for Solar Driveway (Roadway)

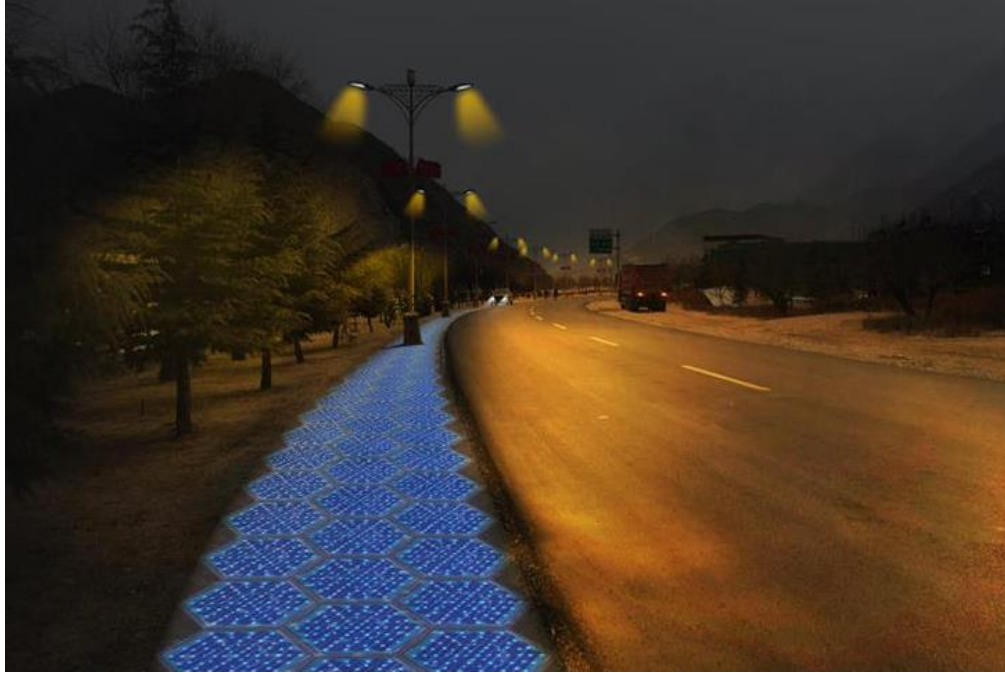
There are two styles for installation, installing on the land surface and embedded into the land. When you plan to install the solar roadway, you should know which installation style is your required.

On the land surface:

It is very easy to install on the land surface. Just need keep the land area be flat, put this solar roadway on the land surface.

Then use the "Z" connector to fix the solar unit with land, no need other basement.(It is similar with to put floor tile on the land surface).





Please note: Currently, we just suggest to move small vehicles on the solar units, **don't suggest to move big vehicles, such as truck, bus, etc.**



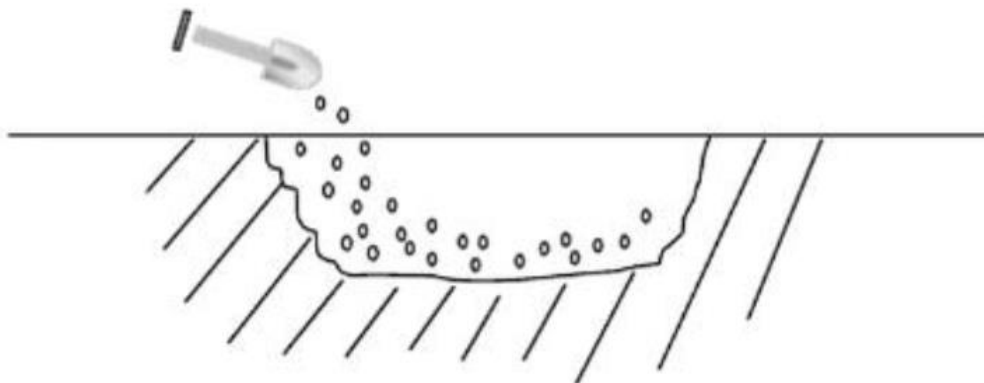
Embedded Land:

The second installation style is to embed into land, and keep solar unit and land surface be on the same horizontal level.

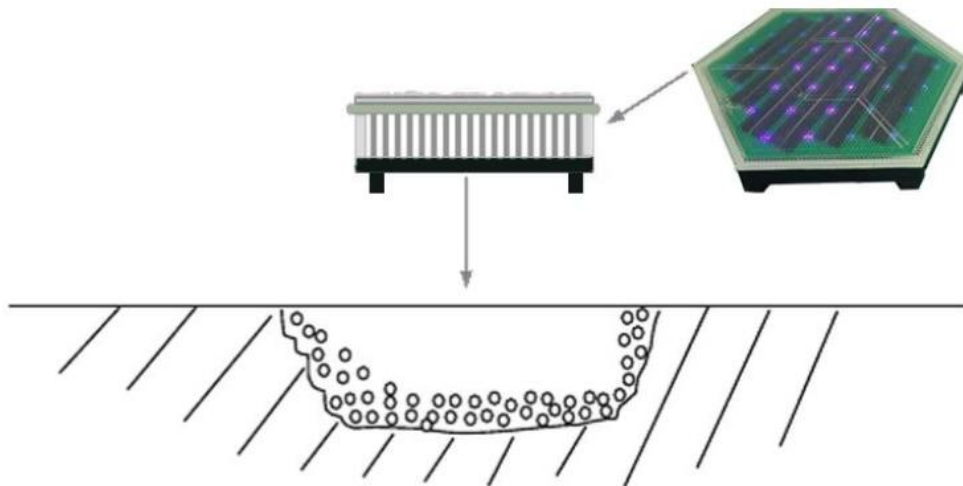


Installation process for embedded land:

- 1). Excavate a hole on the land and put some cement paste



2). Put the solar unit inside the hole



3). Complete to install

